

\$349,999 - 2219, 333 Taravista Drive Ne, Calgary

MLS® #A2213003

\$349,999

3 Bedroom, 2.00 Bathroom, 999 sqft
Residential on 0.00 Acres

Taradale, Calgary, Alberta

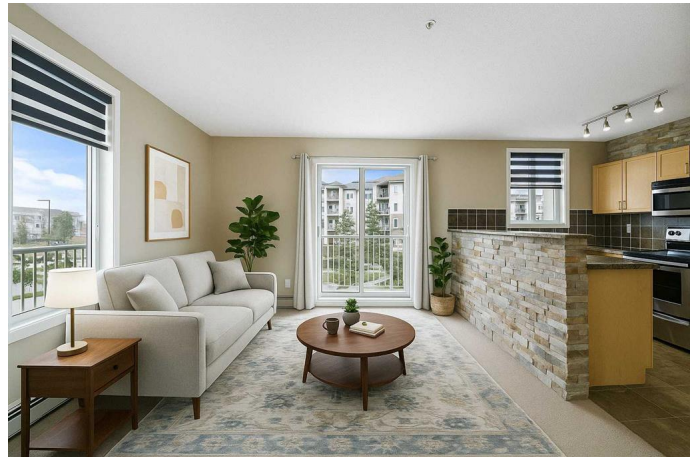
Your Dream Home Awaits in the Heart of
Taradale!

Step into the perfect blend of comfort, style, and convenience with this spacious corner unit apartment offering 999.01 sq ft of beautifully designed living space. Nestled in a vibrant, family-friendly community, this home is ideal for growing families, professionals, or anyone seeking a refined lifestyle in Northeast Calgary.

Boasting two generously sized bedrooms, a full-sized den, and two full bathrooms, this home delivers both space and functionality. The primary suite is your personal retreat, complete with a 4-piece en-suite and a walk-in closet, while the second bedroom—thoughtfully located across the living area—offers comfort and privacy for family or guests, with a nearby second full 4-piece bathroom.

The heart of the home is the open concept living area, where a modern kitchen dazzles with stainless steel appliances, a tiled backsplash, and new window coverings, all set against a spacious and airy layout. Whether you're hosting dinner parties or enjoying quiet mornings, this home feels effortlessly luxurious and welcoming.

Step outside to your wraparound northwest-facing balcony, where you can unwind in the evenings or enjoy a morning coffee bathed in sunlight.



Additional features include:

In-suite laundry with washer & dryer

Assigned parking space & storage unit

Condo fees that cover Electricity, Heat,

Insurance, Maintenance Grounds,

Professional Management, Reserve Fund

Contributions, Snow Removal, Trash, Water

Location, Location, Location!

Minutes away from everything you need:

Saddletowne Circle & 80th Avenue Plaza for

all your shopping and grocery needs

Top-rated schools including Taradale School,

Ted Harrison School, and Nelson Mandela

High School

Easy access to public transit with Saddletowne

C-Train Station just around the corner

Genesis Centre, local parks, and playgrounds

for recreation and family fun, 4-5 minutes from

the Gurudwara

A diverse range of dining options to explore

This is more than just a home â€“ itâ€™s a lifestyle upgrade.

Come see why this unit is the perfect place for your next chapter!

Built in 2008

Essential Information

MLS® # A2213003

Price \$349,999

Bedrooms 3

Bathrooms 2.00

Full Baths 2

Square Footage 999

Acres 0.00

Year Built 2008

Type Residential

Sub-Type Apartment

| | |
|--------|-------------------|
| Style | Single Level Unit |
| Status | Active |

Community Information

| | |
|-------------|------------------------------|
| Address | 2219, 333 Taravista Drive Ne |
| Subdivision | Taradale |
| City | Calgary |
| County | Calgary |
| Province | Alberta |
| Postal Code | T3J 0H4 |

Amenities

| | |
|----------------|-------------|
| Amenities | Elevator(s) |
| Parking Spaces | 1 |
| Parking | Stall |

Interior

| | |
|-------------------|--|
| Interior Features | Breakfast Bar, Closet Organizers, Laminate Counters, No Animal Home, No Smoking Home, Open Floorplan, Storage, Track Lighting, Walk-In Closet(s) |
| Appliances | Dishwasher, Dryer, Electric Range, Range Hood, Refrigerator, Washer, Window Coverings |
| Heating | Baseboard |
| Cooling | None |
| # of Stories | 4 |

Exterior

| | |
|-------------------|---|
| Exterior Features | Balcony |
| Lot Description | Landscaped |
| Roof | Asphalt Shingle |
| Construction | Brick, Concrete, Vinyl Siding, Wood Frame |

Additional Information

| | |
|----------------|------------------|
| Date Listed | April 18th, 2025 |
| Days on Market | 6 |
| Zoning | M-2 |

Listing Details

| | |
|----------------|-------------|
| Listing Office | Real Broker |
|----------------|-------------|

deemed reliable but is not guaranteed accurate by Pillar 9â,,ç. The trademarks MLSÂ®, Multiple Listing ServiceÂ® and the associated logos are owned by The Canadian Real Estate Association (CREA) and identify the quality of services provided by real estate professionals who are members of CREA. Used under license.