

\$225,000 - 800 Range Road 12, Smith

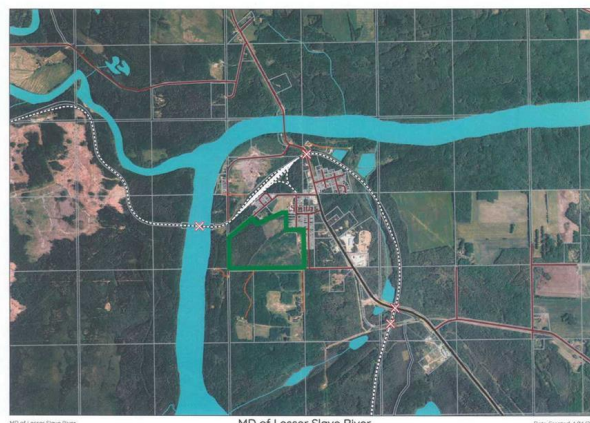
MLS® #A2211676

\$225,000

0 Bedroom, 0.00 Bathroom,
Land on 96.41 Acres

NONE, Smith, Alberta

94 Acres inside Smith town limits, providing natural gas, power, water, and sewer to the edge of the property line. Not often will you have the opportunity to purchase this type of acreage so close to the services of Smith, and the vast expanse of wilderness and the Athabasca River. The town of Smith has a restaurant, grocery & liquor store, gas & convenience, school, post office. It is also a popular choice for those who are employed at the many mills in the Slave Lake area for it's short commute. Don't let this one pass you bye, it's a great place for your new home.



Essential Information

MLS® #	A2211676
Price	\$225,000
Bathrooms	0.00
Acres	96.41
Type	Land
Sub-Type	Residential Land
Status	Active

Community Information

Address	800 Range Road 12
Subdivision	NONE
City	Smith
County	Lesser Slave River No. 124, M.D. of
Province	Alberta
Postal Code	T0G 2B0

Amenities

Utilities Electricity at Lot Line, Natural Gas at Lot Line, Satellite Internet Available, Sewer Available, Water At Lot Line

Exterior

Lot Description Irregular Lot, Many Trees, Native Plants, Private, Treed

Additional Information

Date Listed April 14th, 2025

Days on Market 6

Zoning VACANT RES.

Listing Details

Listing Office CENTURY 21 NORTHERN REALTY

Data is supplied by Pillar 9â„¢ MLSÂ® System. Pillar 9â„¢ is the owner of the copyright in its MLSÂ® System. Data is deemed reliable but is not guaranteed accurate by Pillar 9â„¢. The trademarks MLSÂ®, Multiple Listing ServiceÂ® and the associated logos are owned by The Canadian Real Estate Association (CREA) and identify the quality of services provided by real estate professionals who are members of CREA. Used under license.