

# \$3,500,000 - 28507 Highway 36, Sunnynook

MLS® #A2209533

**\$3,500,000**

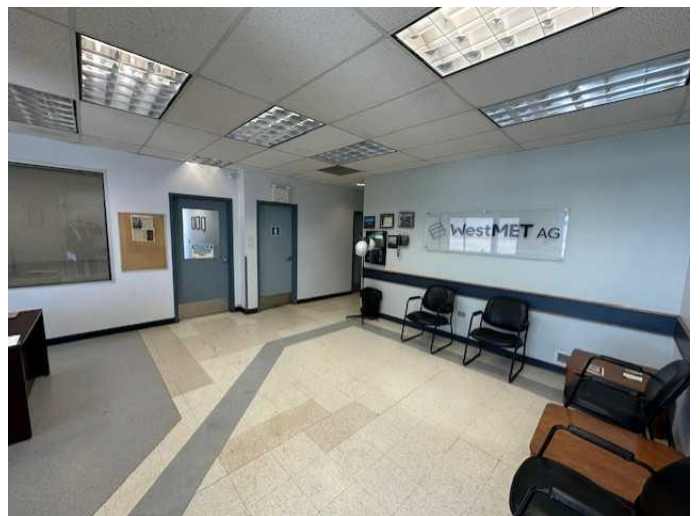
0 Bedroom, 0.00 Bathroom,  
Commercial on 0.00 Acres

NONE, Sunnynook, Alberta

This expansive 37-acre commercial property, available at a competitive price, presents a unique opportunity for a wide range of uses. Previously the main operations hub for the Sheerness Coal Mine, the site is nearing reclamation completion and is ready for its next phase. The property features over 30,000 sq. ft. of shop space and 15,000 sq. ft. of office space, including locker rooms, a training room, lunchroom, conference room, first-aid facilities, and warehouse area. Additionally, there are a 4,000 sq. ft. heated storage building and a 5,000 sq. ft. cold storage building. The shop is fully equipped to accommodate large equipment with 10 overhead doors (20' x 20') and a 50' x 80' wash bay, as well as two 20-ton overhead cranes, one with a 5-ton auxiliary crane. Located just 30 km south of Hanna along Highway 36, a major shipping corridor with no low-hanging power lines, the property is ideally positioned for transportation and logistics, with easy access to Calgary, Edmonton, Red Deer, Lethbridge, Medicine Hat, Saskatoon, and Regina. This site offers immense potential for industrial, manufacturing, or other commercial uses and can be tailored to suit a variety of needs. Advance notice is required for viewings, as it remains an active work site.

Built in 1996

## Essential Information



MLS® #	A2209533
Price	\$3,500,000
Bathrooms	0.00
Acres	0.00
Year Built	1996
Type	Commercial
Sub-Type	Industrial
Status	Active

### **Community Information**

Address	28507 Highway 36
Subdivision	NONE
City	Sunnynook
County	Special Area 2
Province	Alberta
Postal Code	T0J1P0

### **Additional Information**

Date Listed	April 7th, 2025
Days on Market	14
Zoning	Not Classified

### **Listing Details**

Listing Office	eXp Realty
----------------	------------

Data is supplied by Pillar 9â„¢ MLS® System. Pillar 9â„¢ is the owner of the copyright in its MLS® System. Data is deemed reliable but is not guaranteed accurate by Pillar 9â„¢. The trademarks MLS®, Multiple Listing Service® and the associated logos are owned by The Canadian Real Estate Association (CREA) and identify the quality of services provided by real estate professionals who are members of CREA. Used under license.