

# **\$799,900 - 653 Sailfin Drive, Rural Rocky View County**

---

MLS® #A2202649

**\$799,900**

3 Bedroom, 3.00 Bathroom, 2,090 sqft

Residential on 0.10 Acres

Harmony, Rural Rocky View County, Alberta

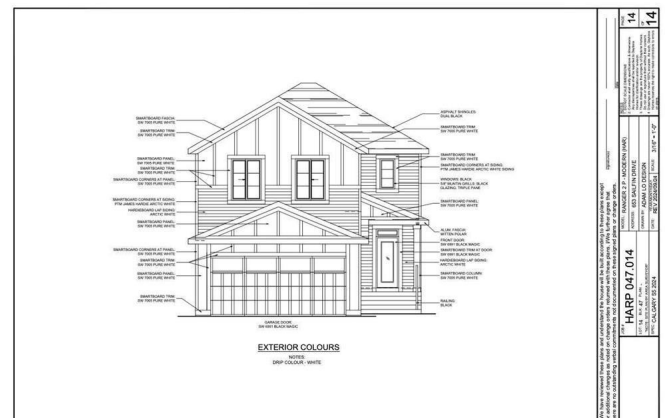
Welcome to 653 Sailfin Drive, a beautifully crafted home in Harmony, one of the most sought-after communities. Built by Daytona Homes, this 2,000+ square foot residence is designed for both style and function, featuring an oversized double-attached garage and a thoughtfully planned layout that maximizes comfort and convenience. Nestled in a community built around recreation, nature, and connection, residents of Harmony enjoy access to a 40-acre lake, scenic walking trails, the renowned Mickelson National Golf Club, playgrounds, and even a future village center, making it a truly unique place to call home. Stepping inside, the mudroom seamlessly flows into the pantry, creating a smart and practical entry point from the garage. The space then opens into a gourmet kitchen with a large central island, providing plenty of prep space and storage while keeping the heart of the home bright and inviting. The kitchen effortlessly connects to the great room and nook, creating an ideal space for both everyday living and entertaining. A gas fireplace in the great room adds warmth and ambiance, while a rear deck off the nook extends your living space outdoors, perfect for BBQs or enjoying the fresh air. Upstairs, the home continues to impress with three well-appointed bedrooms. At the front, two secondary bedrooms offer ample space and share a three-piece bathroom with easy access. A dedicated laundry room is conveniently located nearby, making



Located in Harmony, this home offers the perfect blend of modern comfort and outdoor adventure. Whether you're spending your summers paddleboarding on the lake, golfing at one of Alberta's top courses, or embracing the year-round trails and recreation, this community is designed to enhance your lifestyle in every way. Built by Daytona Homes, known for their quality craftsmanship and commitment to customer care, 653 Sailfin Drive is more than just a home, it's the perfect backdrop for the life you want to build. Book your private tour today and experience everything this incredible home and community have to offer.

## Essential Information

MLS® #	A2202649
Price	\$799,900
Bedrooms	3
Bathrooms	3.00
Full Baths	2
Half Baths	1
Square Footage	2,090
Acres	0.10
Year Built	2025
Type	Residential
Sub-Type	Detached
Style	2 Storey
Status	Active



## Community Information

Address	653 Sailfin Drive
Subdivision	Harmony
City	Rural Rocky View County
County	Rocky View County
Province	Alberta
Postal Code	T3Z 0J8

## Amenities

Amenities	Beach Access
Parking Spaces	2
Parking	Double Garage Attached
# of Garages	2

## Interior

Interior Features	Bathroom Rough-in, Built-in Features, Closet Organizers, Open Floorplan, Walk-In Closet(s)
Appliances	Dishwasher, Electric Stove, Garage Control(s), Microwave, Refrigerator
Heating	Forced Air
Cooling	None
Fireplace	Yes
# of Fireplaces	1
Fireplaces	Gas
Has Basement	Yes
Basement	Full, Unfinished

## Exterior

Exterior Features	None
Lot Description	Back Lane, Back Yard, City Lot
Roof	Asphalt Shingle
Construction	Vinyl Siding, Wood Frame
Foundation	Poured Concrete

## Additional Information

Date Listed	March 14th, 2025
Days on Market	38
Zoning	VR-2
HOA Fees	152
HOA Fees Freq.	MON

**Listing Details**

Listing Office                      Royal LePage Benchmark

Data is supplied by Pillar 9â„¸ MLSÂ® System. Pillar 9â„¸ is the owner of the copyright in its MLSÂ® System. Data is deemed reliable but is not guaranteed accurate by Pillar 9â„¸. The trademarks MLSÂ®, Multiple Listing ServiceÂ® and the associated logos are owned by The Canadian Real Estate Association (CREA) and identify the quality of services provided by real estate professionals who are members of CREA. Used under license.