

# \$635,000 - 65368 Range Road 165, Lac La Biche County

MLS® #A2199314

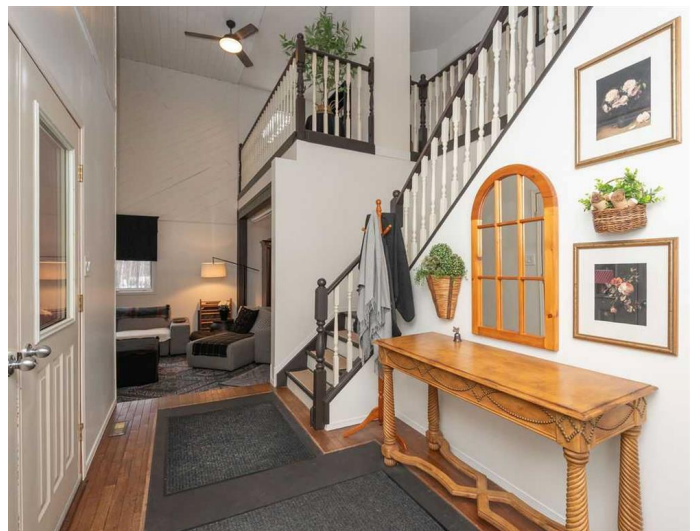
**\$635,000**

6 Bedroom, 4.00 Bathroom, 2,877 sqft  
Residential on 13.49 Acres

NONE, Lac La Biche County, Alberta

Welcome home to your private oasis! This beautiful move in ready 2 storey home has 6 bedrooms, 3 1/2 baths, fully finished double walkout basement with in-law suite, separate games room and 30'x46' shop. The home has been tastefully updated throughout and features a dream master bedroom with 5 piece ensuite and balcony access, 3 large spare bedrooms and 4 piece bath. You are greeted by a large foyer on the main floor which includes a sunken living room with cathedral ceilings, a wood burning fireplace insert, spacious dining area, breakfast nook and kitchen with pantry. There is also a spare bedroom, 2 piece bath, family room on the main & south facing composite deck overlooking the yard. The walkout basement is fully finished with an in-law suite complete with 1 bedroom, 1 full bath, kitchen, living room with its own separate entrance apart from the family rec-room. Hidden in nature with plenty of wildlife, with more than enough room for a family farmstead/hobby farm. There is no shortage of storage with your new 46'x30' shop, with 4 - 10'x9' doors and concrete floor. The property is 2 miles off pavement, close to many lakes and crown land in a central location between Plamondon, Boyle & Lac La Biche. Additional upgrades include newer furnaces, recently installed a/c, washer, dryer, water heater, new cistern pump, and more.

Built in 1991



## Essential Information

|                |                                  |
|----------------|----------------------------------|
| MLS® #         | A2199314                         |
| Price          | \$635,000                        |
| Bedrooms       | 6                                |
| Bathrooms      | 4.00                             |
| Full Baths     | 3                                |
| Half Baths     | 1                                |
| Square Footage | 2,877                            |
| Acres          | 13.49                            |
| Year Built     | 1991                             |
| Type           | Residential                      |
| Sub-Type       | Detached                         |
| Style          | 2 Storey, Acreage with Residence |
| Status         | Active                           |

## Community Information

|             |                      |
|-------------|----------------------|
| Address     | 65368 Range Road 165 |
| Subdivision | NONE                 |
| City        | Lac La Biche County  |
| County      | Lac La Biche County  |
| Province    | Alberta              |
| Postal Code | T0A0R0               |

## Amenities

|              |                        |
|--------------|------------------------|
| Parking      | Double Garage Detached |
| # of Garages | 2                      |

## Interior

|                   |  |
|-------------------|--|
| Interior Features | Ceiling Fan(s), Kitchen Island, No Smoking Home                                      |
| Appliances        | Central Air Conditioner, Dishwasher, Microwave, Refrigerator, Stove(s), Washer/Dryer |
| Heating           | Forced Air, Natural Gas  |
| Cooling           | Central Air  |
| Fireplace         | Yes  |
| # of Fireplaces   | 1  |
| Fireplaces        | Wood Burning   |
| Has Basement      | Yes  |
| Basement          | Finished, Full   |

## Exterior

|                   |                           |
|-------------------|---------------------------|
| Exterior Features | Balcony                   |
| Lot Description   | Landscaped, Lawn, Private |
| Roof              | Asphalt Shingle           |
| Construction      | Vinyl Siding, Wood Frame  |
| Foundation        | Poured Concrete           |

### **Additional Information**

|                |                 |
|----------------|-----------------|
| Date Listed    | March 4th, 2025 |
| Days on Market | 49              |
| Zoning         | Agricultural    |

### **Listing Details**

|                |                            |
|----------------|----------------------------|
| Listing Office | ROYAL LEPAGE COUNTY REALTY |
|----------------|----------------------------|

Data is supplied by Pillar 9â„¢ MLSÂ® System. Pillar 9â„¢ is the owner of the copyright in its MLSÂ® System. Data is deemed reliable but is not guaranteed accurate by Pillar 9â„¢. The trademarks MLSÂ®, Multiple Listing ServiceÂ® and the associated logos are owned by The Canadian Real Estate Association (CREA) and identify the quality of services provided by real estate professionals who are members of CREA. Used under license.