

# \$230,000 - 503 Riverside Drive E, Drumheller

MLS® #A2198811

## \$230,000

3 Bedroom, 1.00 Bathroom, 913 sqft  
Residential on 0.17 Acres

Riverview Park, Drumheller, Alberta

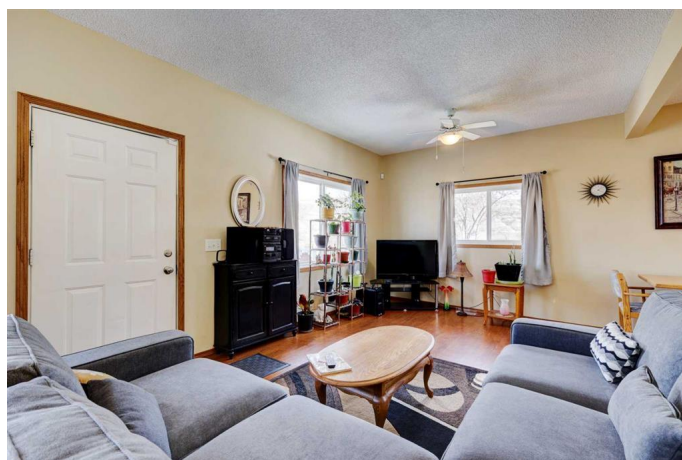
If a fantastic location and one level living is your desire, look no further. This property is close to downtown shopping and right across the street from a river path. It offers three bedrooms, a four piece bathroom, and main floor laundry. The single car garage has a newly installed automatic garage door opener with an additional parking spot right beside. This lovely home is move in ready for the first time home owner, someone ready to downsize, or a great opportunity for investment. Book a viewing today and see what this property has to offer you.

Built in 1935

## Essential Information

|                |             |
|----------------|-------------|
| MLS® #         | A2198811    |
| Price          | \$230,000   |
| Bedrooms       | 3           |
| Bathrooms      | 1.00        |
| Full Baths     | 1           |
| Square Footage | 913         |
| Acres          | 0.17        |
| Year Built     | 1935        |
| Type           | Residential |
| Sub-Type       | Detached    |
| Style          | Bungalow    |
| Status         | Active      |

## Community Information



|             |                       |
|-------------|-----------------------|
| Address     | 503 Riverside Drive E |
| Subdivision | Riverview Park        |
| City        | Drumheller            |
| County      | Drumheller            |
| Province    | Alberta               |
| Postal Code | T0J 0Y5               |

### Amenities

|                |   |
|----------------|---|
| Parking Spaces | 2   |
| Parking        | Off Street, Gravel Driveway, Single Garage Detached |
| # of Garages   | 1   |

### Interior

|                   |  |
|-------------------|--|
| Interior Features | No Animal Home   |
| Appliances        | Electric Stove, Garage Control(s), Microwave, Refrigerator, Window Coverings, Washer/Dryer |
| Heating           | Forced Air, Natural Gas  |
| Cooling           | None   |
| Has Basement      | Yes  |
| Basement          | Exterior Entry, Partial  |

### Exterior

|                   |   |
|-------------------|---|
| Exterior Features | None  |
| Lot Description   | Back Lane, Few Trees, Fruit Trees/Shrub(s), Lawn, Level, Street Lighting, Corner Lot, Landscaped, Standard Shaped Lot |
| Roof              | Asphalt Shingle   |
| Construction      | Wood Frame  |
| Foundation        | None  |

### Additional Information

|                |                  |
|----------------|------------------|
| Date Listed    | March 10th, 2025 |
| Days on Market | 46               |
| Zoning         | ND               |

### Listing Details

|                |  |
|----------------|--|
| Listing Office | Royal LePage Wildrose Real Estate-Drumheller |
|----------------|--|

Data is supplied by Pillar 9â„¢ MLS® System. Pillar 9â„¢ is the owner of the copyright in its MLS® System. Data is deemed reliable but is not guaranteed accurate by Pillar 9â„¢. The trademarks MLS®, Multiple Listing Service® and the associated logos are owned by The Canadian Real Estate Association (CREA) and identify the quality of services provided by real estate professionals who are members of CREA. Used under license.