

# \$734,999 - 143 Edith Drive Nw, Calgary

MLS® #A2191431

**\$734,999**

6 Bedroom, 4.00 Bathroom, 1,816 sqft

Residential on 0.07 Acres

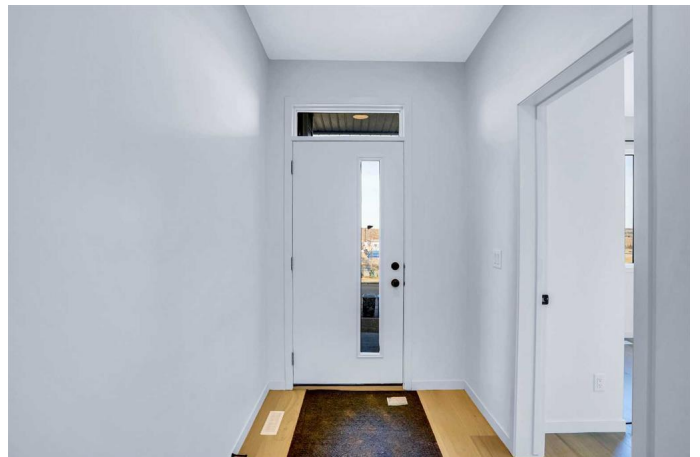
Glacier Ridge, Calgary, Alberta

Welcome to this absolutely amazing and stunning house in Glacier Ridge NW with 2 bedrooms LEGAL suite. As you walk in, you will find open concept SPACIOUS Living room, dining area and rear UPGRADED kitchen with huge centre ISLAND. Main floor also features a bedroom and full bathroom. Upstairs you will find a SPACIOUS bonus room, primary bedroom with Walk-In-Closet and 4 piece en-suite. Other 2 good size bedrooms, 4 piece bathroom and laundry room completes this floor. LEGAL basement suites boasts rec room, 2 spacious bedrooms, 4 piece bathrooms and second kitchen with separate entrance. Good size deck is ready for all your outdoor BBQ needs! Rear parking pad with paved back lane. LOCATION: This property is facing future Community Centre(The village) and close to the playground. Easy access to major roads Shaganappi trail, Sarcee Trail and Stoney trail. Also enjoy the proximity to shopping center. Watch 3D TOUR, don't miss this amazing property and book a showing today!!

Built in 2023

## Essential Information

MLS® #	A2191431
Price	\$734,999
Bedrooms	6
Bathrooms	4.00



Full Baths	4
Square Footage	1,816
Acres	0.07
Year Built	2023
Type	Residential
Sub-Type	Detached
Style	2 Storey
Status	Active

### Community Information

Address	143 Edith Drive Nw
Subdivision	Glacier Ridge
City	Calgary
County	Calgary
Province	Alberta
Postal Code	T3R 2B8

### Amenities

Amenities	None
Parking Spaces	2
Parking	Parking Pad

### Interior

Interior Features	Kitchen Island, No Smoking Home, Quartz Counters, Separate Entrance, Walk-In Closet(s)
Appliances	Electric Stove, Microwave, Range Hood, Refrigerator, Washer/Dryer, Window Coverings
Heating	Forced Air, Natural Gas
Cooling	None
Has Basement	Yes
Basement	Exterior Entry, Finished, Full, Suite

### Exterior

Exterior Features	Private Entrance
Lot Description	Back Lane, Level, Rectangular Lot, Zero Lot Line
Roof	Asphalt Shingle
Construction	Concrete, Vinyl Siding, Wood Frame
Foundation	Poured Concrete

### Additional Information

Date Listed	January 30th, 2025
Days on Market	81
Zoning	R-G
HOA Fees	420
HOA Fees Freq.	ANN

**Listing Details**

Listing Office           Creskide Realty

Data is supplied by Pillar 9â„¢ MLSÂ® System. Pillar 9â„¢ is the owner of the copyright in its MLSÂ® System. Data is deemed reliable but is not guaranteed accurate by Pillar 9â„¢. The trademarks MLSÂ®, Multiple Listing ServiceÂ® and the associated logos are owned by The Canadian Real Estate Association (CREA) and identify the quality of services provided by real estate professionals who are members of CREA. Used under license.