

# \$360,000 - Range Rd 283, Rural Rocky View County

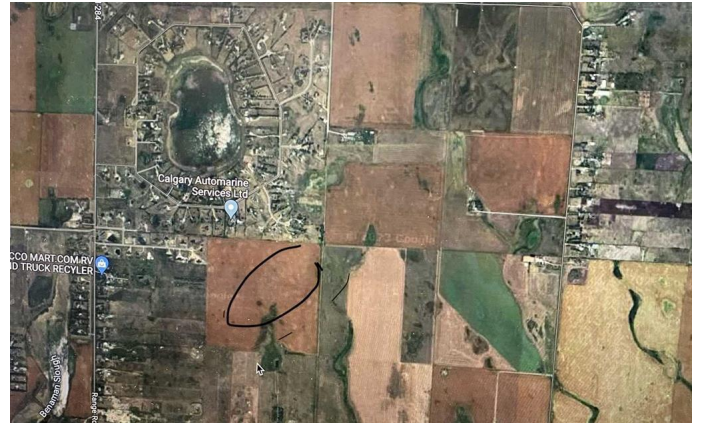
MLS® #A2191012

**\$360,000**

0 Bedroom, 0.00 Bathroom,  
Land on 8.00 Acres

NONE, Rural Rocky View County, Alberta

Purchaser has right to buy 8/160 interest in this parcel, land is presently used as agriculture land



## Essential Information

MLS® #	A2191012
Price	\$360,000
Bathrooms	0.00
Acres	8.00
Type	Land
Sub-Type	Residential Land
Status	Active

## Community Information

Address	Range Rd 283
Subdivision	NONE
City	Rural Rocky View County
County	Rocky View County
Province	Alberta
Postal Code	T2M 1P6

## Amenities

Utilities	None
Waterfront	See Remarks

## Additional Information

Date Listed	February 7th, 2025
Days on Market	75
Zoning	A-Gen



## Listing Details

Listing Office            RE/MAX Real Estate (Mountain View)

Data is supplied by Pillar 9â,,ç MLSÂ® System. Pillar 9â,,ç is the owner of the copyright in its MLSÂ® System. Data is deemed reliable but is not guaranteed accurate by Pillar 9â,,ç. The trademarks MLSÂ®, Multiple Listing ServiceÂ® and the associated logos are owned by The Canadian Real Estate Association (CREA) and identify the quality of services provided by real estate professionals who are members of CREA. Used under license.