

# \$399,000 - 241 Prairie Rose Place S, Lethbridge

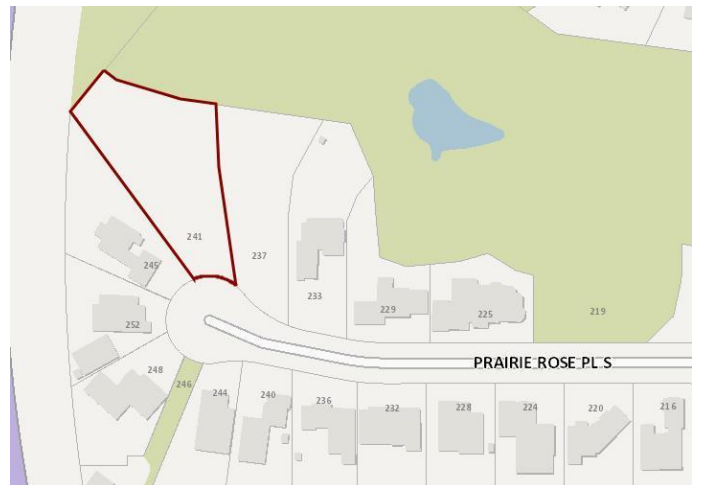
MLS® #A2190192

**\$399,000**

0 Bedroom, 0.00 Bathroom,  
Land on 0.74 Acres

Arbour Ridge, Lethbridge, Alberta

Welcome to Prairie Arbour Estates! This community is the premier destination for estate living in south Lethbridge and serves as the benchmark for upscale developments in southern Alberta. Prairie Arbour Estates boasts unrivaled views of Sixmile Coulee and easy access to walking trails and the spectacular Prairie Arbour Park. This 0.74 acre lot sits in a quiet cul-de-sac and backs onto the coulee edge, fenced with gate access to the walking paths. Coulee view lots are in limited quantity and lots of this size are even more limited. Comparative market value for a lot of this size and location makes this property a tremendously valuable investment.



## Essential Information

MLS® #	A2190192
Price	\$399,000
Bathrooms	0.00
Acres	0.74
Type	Land
Sub-Type	Residential Land
Status	Active



## Community Information

Address	241 Prairie Rose Place S
Subdivision	Arbour Ridge
City	Lethbridge
County	Lethbridge

Province	Alberta
Postal Code	T1K 5V7

### **Exterior**

Lot Description	No Neighbours Behind, Pie Shaped Lot, Views
-----------------	---

### **Additional Information**

Date Listed	January 26th, 2025
Days on Market	87
Zoning	DC

### **Listing Details**

Listing Office	REAL BROKER
----------------	-------------

Data is supplied by Pillar 9â„¢ MLSÂ® System. Pillar 9â„¢ is the owner of the copyright in its MLSÂ® System. Data is deemed reliable but is not guaranteed accurate by Pillar 9â„¢. The trademarks MLSÂ®, Multiple Listing ServiceÂ® and the associated logos are owned by The Canadian Real Estate Association (CREA) and identify the quality of services provided by real estate professionals who are members of CREA. Used under license.