

# \$275,000 - 80242 Rge Rd 65, Rural Saddle Hills County

MLS® #A2188868

## \$275,000

4 Bedroom, 1.00 Bathroom, 1,152 sqft

Residential on 9.88 Acres

NONE, Rural Saddle Hills County, Alberta

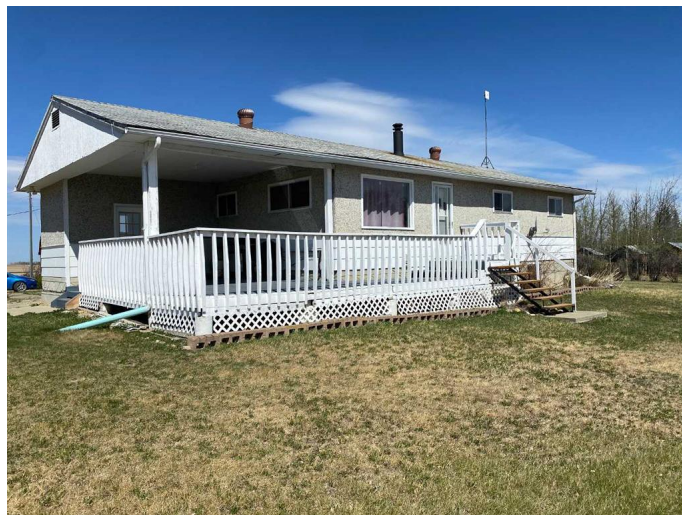
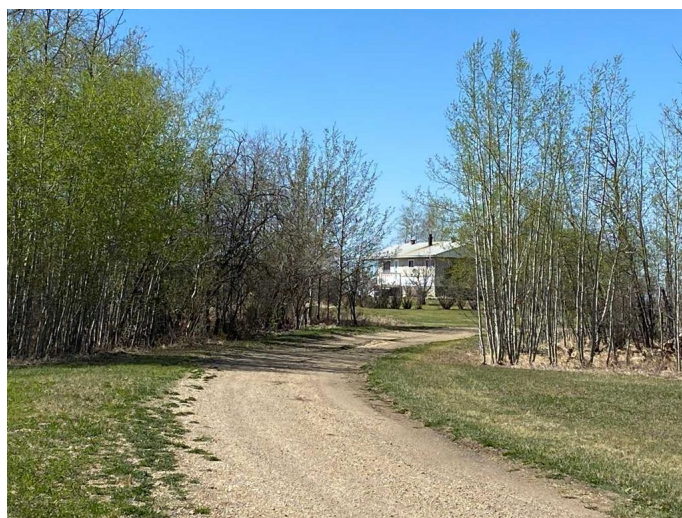
This great acreage is gorgeous! You get an amazing 10 acres with mature trees, circular driveway, 20 x 30 5 stall barn, 32 x 22 shop and 16 x 20 garage...You have an incredible south view off the deck and out the living room window over looking the fields . The kitchen is large with lots of cupboards. There is a huge family room up and another good size down. 3 large bedrooms up and 1 down make for lots of space for your family. This is a new subdivision, so taxes are not yet assessed, and there is also a new septic mound, so you won't have to worry about sewer issues! Call to view today

Built in 1962

## Essential Information

MLS® #	A2188868
Price	\$275,000
Bedrooms	4
Bathrooms	1.00
Full Baths	1
Square Footage	1,152
Acres	9.88
Year Built	1962
Type	Residential
Sub-Type	Detached
Style	Acreage with Residence, Bungalow
Status	Active

## Community Information



Address	80242 Rge Rd 65
Subdivision	NONE
City	Rural Saddle Hills County
County	Saddle Hills County
Province	Alberta
Postal Code	T0H 3G0

### **Amenities**

Parking Spaces	6
Parking	Double Garage Detached, Parking Pad, See Remarks
# of Garages	2

### **Interior**

Interior Features	Ceiling Fan(s), Kitchen Island, See Remarks
Appliances	Electric Stove, Refrigerator, Washer/Dryer
Heating	Forced Air, Natural Gas
Cooling	None
Has Basement	Yes
Basement	Finished, Full

### **Exterior**

Exterior Features	Fire Pit, Private Yard
Lot Description	Fruit Trees/Shrub(s), Private, See Remarks, Few Trees
Roof	Asphalt Shingle
Construction	Stucco, Wood Siding
Foundation	Poured Concrete

### **Additional Information**

Date Listed	January 20th, 2025
Days on Market	92
Zoning	ag

### **Listing Details**

Listing Office	Sutton Group Grande Prairie Professionals
----------------	---

Data is supplied by Pillar 9â„¢ MLS® System. Pillar 9â„¢ is the owner of the copyright in its MLS® System. Data is deemed reliable but is not guaranteed accurate by Pillar 9â„¢. The trademarks MLS®, Multiple Listing Service® and the associated logos are owned by The Canadian Real Estate Association (CREA) and identify the quality of services provided by real estate professionals who are members of CREA. Used under license.