

\$1,950,000 - 264212 Lochend Road Nw, Rural Rocky View County

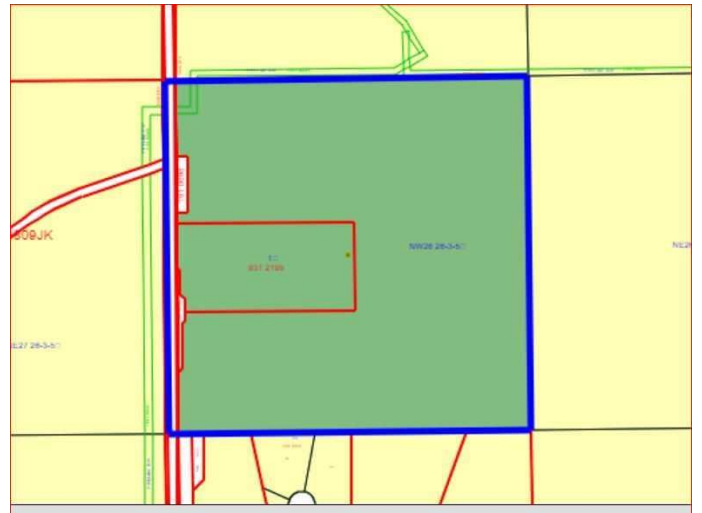
MLS® #A2186295

\$1,950,000

0 Bedroom, 0.00 Bathroom,
Land on 137.83 Acres

NONE, Rural Rocky View County, Alberta

Outstanding Land Investment Opportunity - 137 Acres on Lochend Rd. (Hwy. 766). Just 10 miles NW of Calgary. Can be purchased with the adjoining NE 160 acres which has a heated shop and living quarters. Enormous potential for use as an RV storage site, a construction equipment storage facility, country residential development, agri-business, equine arena and stables, and a country residential subdivision are some of the possibilities for this property. The north half of the land rolls slightly with gentle slopes with some mountain views. It has been recently used as hayland. The south portion is gently rolling pasture land that adjoins an existing country residential development on its southerly border. Alberta Transportation recently upgraded the access onto Lochend Rd. Airdrie, Cochrane and Calgary are within easy driving distance.



Essential Information

MLS® #	A2186295
Price	\$1,950,000
Bathrooms	0.00
Acres	137.83
Type	Land
Sub-Type	Commercial Land
Status	Active

Community Information

Address	264212 Lochend Road Nw
Subdivision	NONE
City	Rural Rocky View County
County	Rocky View County
Province	Alberta
Postal Code	T4C 4A6

Exterior

Lot Description	Cleared, Farm, Pasture
-----------------	------------------------

Additional Information

Date Listed	January 8th, 2025
Days on Market	104
Zoning	AG-Gen

Listing Details

Listing Office	RE/MAX Real Estate (Mountain View)
----------------	------------------------------------

Data is supplied by Pillar 9â„¢ MLSÂ® System. Pillar 9â„¢ is the owner of the copyright in its MLSÂ® System. Data is deemed reliable but is not guaranteed accurate by Pillar 9â„¢. The trademarks MLSÂ®, Multiple Listing ServiceÂ® and the associated logos are owned by The Canadian Real Estate Association (CREA) and identify the quality of services provided by real estate professionals who are members of CREA. Used under license.