

# \$1,200,000 - 5310 50 Avenue, Sylvan Lake

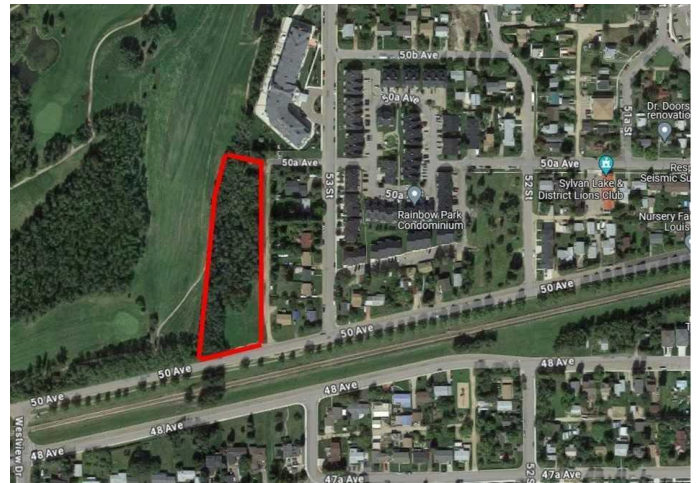
MLS® #A2183679

**\$1,200,000**

0 Bedroom, 0.00 Bathroom,  
Land on 2.29 Acres

Downtown, Sylvan Lake, Alberta

Multi-family site backing onto the picturesque Sylvan Lake Golf and Country Club. Plans may be available for a large commercial and residential condo. Alternatively, it would be ideal for a multi-family investment property in a market where the vacancy rate is currently almost zero. Property is just short walk to downtown and the beach.



## Essential Information

MLS® #	A2183679
Price	\$1,200,000
Bathrooms	0.00
Acres	2.29
Type	Land
Sub-Type	Residential Land
Status	Active

## Community Information

Address	5310 50 Avenue
Subdivision	Downtown
City	Sylvan Lake
County	Red Deer County
Province	Alberta
Postal Code	T4S1E7

## Amenities

Utilities Electricity Available, Natural Gas Available

## Exterior

Lot Description No Neighbours Behind, Near Golf Course, On Golf Course

### **Additional Information**

Date Listed January 1st, 2025

Days on Market 111

Zoning WDCD - Waterfront Direct

### **Listing Details**

Listing Office RE/MAX real estate central alberta

Data is supplied by Pillar 9â„¸ MLSÂ® System. Pillar 9â„¸ is the owner of the copyright in its MLSÂ® System. Data is deemed reliable but is not guaranteed accurate by Pillar 9â„¸. The trademarks MLSÂ®, Multiple Listing ServiceÂ® and the associated logos are owned by The Canadian Real Estate Association (CREA) and identify the quality of services provided by real estate professionals who are members of CREA. Used under license.