

\$674,900 - 20.01 Acres Twp Rd 282, Rural Rocky View County

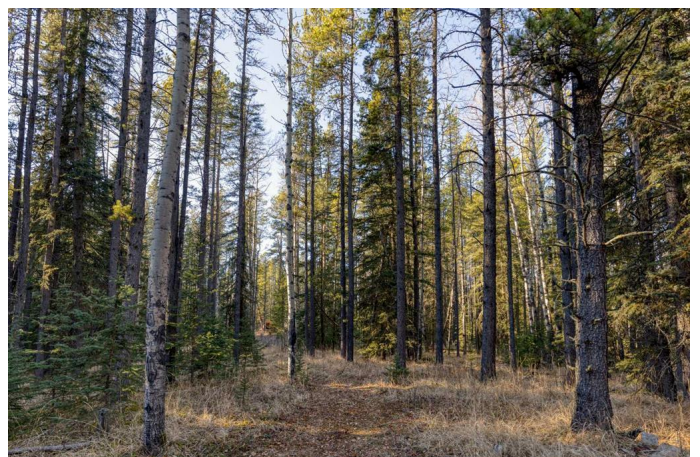
MLS® #A2179279

\$674,900

0 Bedroom, 0.00 Bathroom,
Land on 20.01 Acres

NONE, Rural Rocky View County, Alberta

Discover the perfect opportunity to own 20 acres of pristine beautifully treed raw land. Located in the beautiful sought after area of Grand Valley. You will be secluded in the trees and nestled amongst the natural forest and grass land. This land offers endless potential for you to build your dream property. Land is a bit rolling and there are many many spots to choose to build your walkout home. Property is fenced down West and East sides. The zoning is Ag Small that permits 2 dwellings and an accessory building up to 10,010 square feet. Rockyview County bylaws permit 9 animal units on land this size. Enjoy seclusion and peace and quiet. Lots of birds and wild life and only a half mile off of pavement. Water Well is 5 gpm. Subject to final subdivision approval from Rockyview County and creating a separate title for this 20 Acres. Don't miss out come see today.



Essential Information

| | |
|-----------|------------------|
| MLS® # | A2179279 |
| Price | \$674,900 |
| Bathrooms | 0.00 |
| Acres | 20.01 |
| Type | Land |
| Sub-Type | Residential Land |
| Status | Active |

Community Information

| | |
|-------------|-------------------------|
| Address | 20.01 Acres Twp Rd 282 |
| Subdivision | NONE |
| City | Rural Rocky View County |
| County | Rocky View County |
| Province | Alberta |
| Postal Code | T4C 2W1 |

Exterior

| | |
|-----------------|--|
| Lot Description | Gentle Sloping, Many Trees, Secluded, See Remarks, Brush, Corners Marked, Wooded |
|-----------------|--|

Additional Information

| | |
|----------------|---------------------|
| Date Listed | November 14th, 2024 |
| Days on Market | 158 |
| Zoning | A-SML |

Listing Details

| | |
|----------------|------------|
| Listing Office | CIR Realty |
|----------------|------------|

Data is supplied by Pillar 9â„¢ MLS® System. Pillar 9â„¢ is the owner of the copyright in its MLS® System. Data is deemed reliable but is not guaranteed accurate by Pillar 9â„¢. The trademarks MLS®, Multiple Listing Service® and the associated logos are owned by The Canadian Real Estate Association (CREA) and identify the quality of services provided by real estate professionals who are members of CREA. Used under license.