

\$155,000 - 2220 22 Avenue, Delburne

MLS® #A2148279

\$155,000

3 Bedroom, 1.00 Bathroom, 925 sqft
Residential on 0.08 Acres

NONE, Delburne, Alberta

A comfortable 3 bedroom unit with living room, kitchen, dining room, 4 piece bathroom all on main floor. Basement is wide open, unfinished, with furnace room and laundry area tucked into a corner. A very affordable home.

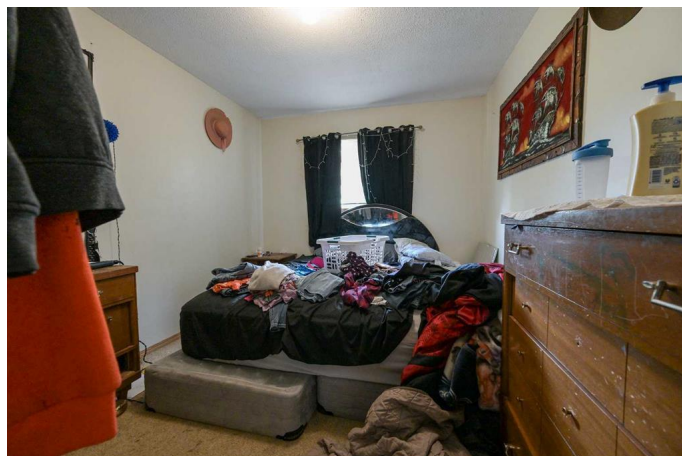
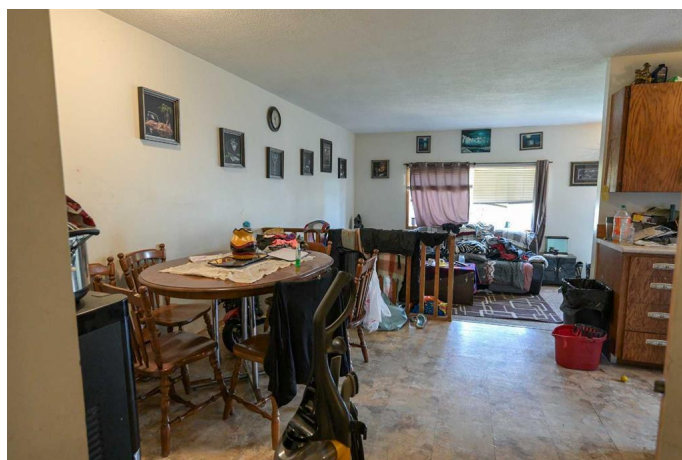
Built in 1983

Essential Information

MLS® #	A2148279
Price	\$155,000
Bedrooms	3
Bathrooms	1.00
Full Baths	1
Square Footage	925
Acres	0.08
Year Built	1983
Type	Residential
Sub-Type	Semi Detached
Style	Bi-Level, Side by Side
Status	Active

Community Information

Address	2220 22 Avenue
Subdivision	NONE
City	Delburne
County	Red Deer County
Province	Alberta
Postal Code	T0M 0V0



Amenities

Parking Spaces	2
Parking	Off Street

Interior

Interior Features	Vinyl Windows, Wood Windows, Laminate Counters
Appliances	Refrigerator, Stove(s), Dishwasher, Washer/Dryer
Heating	Forced Air, Natural Gas
Cooling	None
Has Basement	Yes
Basement	See Remarks, Unfinished

Exterior

Exterior Features	Private Entrance, Rain Gutters
Lot Description	Back Yard, Few Trees, Lawn
Roof	Asphalt Shingle
Construction	Stucco, Wood Frame, Wood Siding
Foundation	Poured Concrete

Additional Information

Date Listed	July 10th, 2024
Days on Market	286
Zoning	R2

Listing Details

Listing Office	Royal LePage Network Realty Corp.
----------------	-----------------------------------

Data is supplied by Pillar 9â„¢ MLSÂ® System. Pillar 9â„¢ is the owner of the copyright in its MLSÂ® System. Data is deemed reliable but is not guaranteed accurate by Pillar 9â„¢. The trademarks MLSÂ®, Multiple Listing ServiceÂ® and the associated logos are owned by The Canadian Real Estate Association (CREA) and identify the quality of services provided by real estate professionals who are members of CREA. Used under license.